

**PAKISTAN SCIENCE FOUNDATION
1-CONSTITUTION AVENUE, G-5/2
ISLAMABAD
(PSF Website www.psf.gov.pk)**

LAUNCHING OF STEM IN PAKISTAN, PHASE-I

INVITATION OF BID FOR ESTABLISHMENT OF PSF STEM ACADEMY/PMU

TENDER NOTICE

Pakistan Science Foundation, Islamabad, a funding organization for the development of Scientific and Technological Research for Socio-economic development and popularization of Scientific & Technological knowledge in the country STEM laboratory, invites sealed bids(single stage single envelop procedure) from contractors/ dealers, registered with PEC, Income Tax and Sales Tax Departments, Govt. of Pakistan and having names in Active Tax Payers list for Renovation Work of rooms and passages for establishment of PSF STEM Academy /PMU as per details at PSF, Islamabad. .

Bidding Documents/BOQ, containing detailed terms and conditions, method of renovation/procurement, procedure for submission of bids, bid security, bid validity, opening of bid, evaluation criteria, clarification for rejection of bids, performance guarantee etc. are available for the interested bidders at the office of the undersigned, at Pakistan Science Foundation, 1-Constitution Avenue, G-5/2, Islamabad, on official request, without any cost. Bidding Documents/ BOQ can also be downloaded from our website www.psf.gov.pk free of cost.

The bids, prepared in accordance with the instructions in the bidding documents duly annexed with 3% earnest money must reach at the office of the undersigned at 1-Constitution Avenue, G-5/2, Islamabad on or before 17th January till 11:00 hrs. Bids will be opened the same day at 11:30 hrs. The advertisement is also available on PPRA website at www.ppra.gov.pk.

Project Director
(STEM)
Pakistan Science Foundation
1-Constitution Avenue, G-5/2
Islamabad.
Tel: 051-9215096
051-9204549
Fax: 051-9202468

**PAKISTAN SCIENCE FOUNDATION
1-CONSTITUTION AVENUE, G-5/2
ISLAMABAD
(PSF Website www.psf.gov.pk)**

TENDER DOCUMENT

Name of Firm:- _____

Address:- _____

Tel. No. _____ MOBILE NO. _____ FAX. NO. _____

GST Registration No. _____

NTN. No. _____

ACTIVE TAX PAYERS LIST NO. WITH PROOF: _____

*(Attested copies of certificates must be attached)

PSDP " Launching of STEM in Pakistan, Phase-I" PAKISTAN SCIENCE FOUNDATION ISLAMABAD

SCHEDULE OF VALUES

Sr.#	Description	Unit	Qty	Rate (Rs.)	Amount (Rs.)
1	<u>DEMOLITION AND DISMANTLING</u>				
	Demolition of walls built in brick work in cement mortar including pillar, lintels, struts, etc.	Cft	38		
2	<u>ANTI TERMITE TREATMENT:-</u>				
	Providing and performing anti termite treatment by spray/sprinkling/injecting the Agenda 25EC Bayer Environmental sciences France in Ratio one Liter of Agenda 25EC to 250 liters of water. In case when the base concrete of floor is laid in place of first two operations the chemical will be injected on both sides of the walls by making holes at 1 meter C/C to the maximum saturation at least 3 and final application be applied on top the base concrete @ 4 Ltr. per Sq. M.	Sft	2381		
3	<u>BRICK MASONRY WORKS:-</u>				
	First class ordinary burnt clay Brick Provide and lay first class ordinary burnt clay Brick (having strength 1300 psi minimum). The bricks must be left with good sharp edges. The brick for use in the works shall be 225mm long, 115mm high and of thicknesses of 75mm or as shown on the drawings laid in 1:5 cement mortar. All bricks shall be bedded on a solid bed of mortar; vertical faces of all bricks shall be well buttered before being laid and the whole well grouted at each course. 4½" Thick Super Structure (1st Class Masonry)	Cft	180		
4	<u>PLAIN CEMENT SAND WALL PLASTERING</u>				
	Internal Plaster (Walls) Providing and applying at any height 1/2" to 3/4" thick ordinary Portland cement sand plaster (1:5) to internal walls and slab ceiling, including lifting, hosting, scaffolding, preparation of the surface before plastering, curing & finishing including the cost Mesh (Jali) and corner angle to be installed on each joint between RCC Beam/Wall & Masonry wall, to save from any cracks to be occurred etc complete in all respect as directed by the Engineer. (Lucky/Bestway brands)	Sft	480		

5	<u>DRY PARTITION WALL-A</u>				
	Dry Partition Wall 100mm thick made of durable galvanized steel and Gypsum borad on both sides filled with Glasswool as thermal and acoustic insulation as dtails shown on Drawing and as directed by Engineer.	Sft	393		
6	<u>SEMI GLAZED PARTITION WALL-B</u>				
	Providing and fixing of Semi Glazed partition wall, bottom portion 100mm thick made of durable galvanized steel and Gypsum borad on both sides and Top Portion with 8mm thick tempered cleared glass with suitable Aluminium sections of Pakistan cables, Prime, Chawla or equivalent, complete in all respects as per specifications, as details shown on drawings and as directed by the Engineer.	Sft	490		
7	<u>FIXED GLAZING PARTITION WALL-C</u>				
	Providing and fixing of glass partition walls with 2mm standard aluminum sections of Pakistan cables, Prime, Chawla or equivalent, fixed with 12mm thick tempered milky glass, complete in all respects as per specifications, as details shown on drawings and as directed by the Engineer.	Sft	249		
8	<u>GLAZED DOORS</u>				
	Providing and fixing of glass doors in partition walls with standard aluminium H-sections of Pakistan cables Ltd, Chawla, Prime or equivalent with 12mm thick clear tempered glass including frosted film in defined patterns if shown on the drawings, the doors will be provided with stainless steel handles and all other hardwares including heavy duty GCC or approved equivalent door machines, complete in all respects as per specifications, as details shown on drawings and as directed by the Engineer.	Sft	140		
9	<u>UPVC DOORS</u>				
	Supply and fix uPVC door, 60mm thick shutter , groove panel 20mm thick, filled uPVC Panel complete exc 1.9 Sqm super each in any colour incl all nec fittings, mongery, Fly Proof netting, all as spd.	Sft	55		
10	<u>ALUMINUM WINDOWS & VENTILATORS:</u>				

	Providing and fixing 2mm sectional thickness 101mm wide of approved colour aluminium, ventilators with fly proof shutters of sectional thick 1.4mm for sliding portions, fixed to concrete or masonry surfaces by means of plastic fisher plugs, screws for windows, inclusive of 5mm tempered glass but not limited to hinges, Matex Japan rollers, sliding lock having press buttons, handles, stays, etc; complete as per drawings and as directed by the Engineer.	Sft	50		
11	<u>PORCELAIN FLOOR TILE:</u>				
	Porcelain Master Tile 24"x24" , Providing and laying polished/matt finish Porcelain tiles of approved make and size, colour, and shade with patches/borders pattern in dark color, laid on cement paste having addition of tile bond at 15% by weight of cement laid over 1" thick 1:4 cement sand base mortar, over existing PCC 1:2:4 complete as per detail shown on the drawing, specifications, and as directed by the Engineer.	Sft	2047		
12	<u>MATT FINISH FLOOR TILE:</u>				
	Porcelain Master Tile 12"x24" , Providing and laying polished/matt finish Porcelain tiles of approved make and size, colour, and shade with patches/borders pattern in dark color, laid on cement paste having addition of tile bond at 15% by weight of cement laid over 1" thick 1:4 cement sand base mortar, over existing PCC 1:2:4 complete as per detail shown on the drawing, specifications, and as directed by the Engineer.	Sft	167		
13	<u>PORCELAIN WALL TILES :</u>				
	Porcelain Master Wall tile , providing and laying best quality approved tiles (12"x24"), cutting where required including C.C 1:6 up to required thickness or dry bond, grouting with cement slurry of matching pigment jointing, finishing and cleaning etc laid in pattern, complete in all respects.Brand Porcellain light Color.	Sft	334		
14	<u>GYPSUM SUSPENDED CEILING 24" X 24":</u>				
	Providing & laying laminated gypsum board Elephant Brand ceiling , 24"x24" DFB/CKM or equalant (with aluminum back) in straight, curved, tiles or multiple profiles as shown on drawing section, fixed with proper aluminum, " T" & "L" section with appropriate suspension system complete in all respect.	Sft	2214		
15	<u>COUNTERS WITH GRANITE TOP</u>				
	Supply and fix kitchen floor/ sink floor cabinet 600 mm wide and 862mm high with First floor soft wood frame 19mm thick Teak veneered board shutter, drawers, incl all necessary chromium plated (CP) mongery RCC slab, 25mm thick white/coloured granite top slab PCC inside complete in all respect.	Sft	126		

16	<u>EMULSION PAINTING:</u>				
	Providing and applying three coats of emulsion paint (Supreme Quality of ICI/Berger/Nippon) or other approved shade including primer of approved make, finishing smooth, complete with rubbing, sand papering, cleaning and approved make premixed putty filling including making the surface before applying the primer coat, complete as per specifications and as directed by the Engineer.	Each	3882		
17	<u>PLUMBING FIXTURES, FITTINGS AND ACCESSORIES</u>				
a	Providing & fixing European type water closet of approved color, including all accessories and fittings all joints to services and drains, plugging and screwing as necessary to the structure and making good the same complete in all respects. (Porta HD-131N) having following specs: Vitreous China,302 SS,Siphon Jet, Round Bowl, Floor-mounted, Floor Outlet. Top of Toilet Seat Height above floor shall be 14 to 15 inches, except for 17 to 19 inches for wheel chair WC's. Provide wax bowl ring i/c plastic sleeve. Water flushing of the WC shall not exceed 6 liters per Flush. Provide a dual flush toilet with a second flushing option that shall not exceed 4 liters per flush. Provide white solid plastic round closed front seat with cover.	Each	2		
b	Providing & fixing wash hand basin including all accessories and fittings, all joints to services and drains, plugging and screwing as necessary to the structure, complete in all respects having following specs: Vitreous China,302 SS self-rimming, minimum dimension of 19" wide x 17" front to rear with supply openings for use with the top mounted center set faucets, furnished template and mounting kit by lavatory manufacturer. Mount counter with the top surface 34" above floor and with 29" minimum clearance from the bottom of the counter face to floor. Provide top mounted washer-less center set lavatory faucet.	Set	2		
c	Providing and fixing beveled edge mirror with frame of size mentioned below of Belgium glass or equivalent as approved by the Engineer Incharge complete in all respects to their entire satisfaction complete with 5 mm thick fixed to walls etc. complete in all respects, having following specs: Provide imported mirror with beveled/polished edges, mirror to be fixed with SS clamps. Size 2'x2'	Each	2		

d	Providing and Fixing of Muslim Showers including double Bib cock as approved by the Architect with flexible hose & wall holder, with high quality hardware etc, complete in all respect as per drawings and specification and as approved by the Consultant.	Each	2		
e	Supply and fix, Toilet Paper Holder, any shape pattern and size, Pak made with plugs, screws etc complete, fixed to concrete, bricks, stone or wood work.	Each	2		
f	Providing and Fixing of Floor Drains as approved by the Architect, the floor drain shall be made of stainless steel heavy duty class with grating with 4" diameter connection and shall be with removeable cover, and fixing in an approved manner, complete in all respect as per drawings, specifications and or as approved by the Consultant.	Each	3		
g	Supply and fix, u-PVC, vent pipe 75 mm dia, with plain end and solvent cement joint complete in all respects per specifications drawings and as approved by the Consultant	Rft	25		
h	Providing, fixing, testing and commissioning of UPVC Pipes Class-B 100mm dia conforming to (BS 4514, Bs 5255 & BS 4660/BS 979), soil waste pipes with all type fittings and special like bend, tee, Yees, reducing socket, junction door, Vents, syphons, traps, etc, this also includes the excavation, surface preparation, laying of pipes, covering with sand and back filling. the pipes shall be either solution welded or with gaskets slip on joints etc including providing holes in civil works, core cutting, connections with manholes, leak testing etc, complete in all respects as per specifications, drawings and as approved by the Consultant.	Rft	35		
i	Providing, fixing, testing and commissioning of UPVC Pipes Class-B 75mm dia conforming to (BS 4514, Bs 5255 & BS 4660/BS 979), soil waste pipes with all type fittings and special like bend, tee, Yees, reducing socket, junction door, Vents, syphons, traps, etc, this also includes the excavation, surface preparation, laying of pipes, covering with sand and back filling. the pipes shall be either solution welded or with gaskets slip on joints etc including providing holes in civil works, core cutting, connections with manholes, leak testing etc, complete in all respects as per specifications, drawings and as approved by the Consultant.	Rft	15		
j	Supply and fix reinforced cement concrete pipes 230mm bore , laid and jointed but except cost of pipes collars, fittings. as specified.	Rft	40		

k	Civil construction of Manholes upto 3 Ft depth including excavation, surface preparation, brick masonry construction, RCC cover with manhole provision & backfilling connections with piping etc. the construction details for these Manholes will be given by the engineer complete in all respects as approved by the Consultant	Each	2		
l	Providing and fixing Kitchen Sink made of stainless steel of approved quality and shall be installed in approved manner, and shall be including of C.I. brackets, CP bottle trap waste pipe, waste couplings, plug with chain; 1/2" dia. C.P. flexible copper inlet hot and cold pipes, pillar cocks for mixer including all fittings made of Master Sonex and Faisal, complete in all respects as per drawings and specifications and as approved by the Consultant.	Each	1		
18	<u>INTERNAL ELECTRIFICATION</u>				
a	Wiring for one light point controlled by one switch wired with 2x1.5mm ² +1x1.5mm ² wires with circuit 2x2.5mm ² +1x1.5mm ² wires including 16 SWG steel box, PVC pipe (make Beta / Shavyl or other approved) from D.B to point complete in all respect.	Each	153		
b	As above but wiring for 10/15 Amp universal switch socket outlet wired with 2x2.5mm ² + 1x1.5mm ² wires from D.B with 16 SWG steel outlet box and PVC pipe complete in all respect.	Each	40		
c	As above but wiring for 15/20amp Switch socket wired with 2x4mm ² + 1x2.5mm ² wires from DB with 16SWG steel outlet box and PVC pipe complete in all respect.	Each	12		
d	Supply at site, installation, testing and commissioning of Five gang light control switches 10 Amps, 250Volts one way, including appropriate size concealed MS, powder coated back box, complete in all respects.	Each	15		
e	Providing, fixing, testing and commissioning of the LED ceiling concealed light 13 Watt fitting 100mm dia including suspension / fixing material as per approved manufacturer list, complete with all respect.	Each	153		
f	Supply at site, installation, testing and commissioning of 3 pin switched socket unit 15/20 Amps, 250Volts, round pin including appropriate size MS, powder coated back box, complete in all respects.	Each	40		

g	Supply at site, installation, testing and commissioning of 3 pin switched socket unit 20 Amps, 250Volts, round pin including appropriate size MS, powder coated back box, complete in all respects.	Each	12		
h	Supply and Installation of Split type 2Ton AC MIDEA Brand make heat and cool complete including copper pipe, drain pipe, outdoor unit stand and remote etc in all respect approved by the Engineer.	Each	6		
Total Amount					

Terms & Conditions:-

- i. Firms should quote their rates including all taxes after visiting the sites.
- ii. The job must be completed at Pakistan Science Foundation, Constitution Avenue, G-5/2, Islamabad.
- iii. **Bid Evaluation Criteria: Bid will be evaluated in terms of the prescribed specification/BOQ of complete work. Total work will be awarded to single Contractor on lowest cost basis.**
- iv. Completion time 30 days.
- v. Income Tax and all other Govt. taxes will be deducted as per rules.
- vi. Earnest money in the shape of DD/Pay Order @ 3% of the bid in favor of Pakistan Science Foundation, Islamabad along-with Broacher/Technical Profile of the items should be attached with the bid.
- vii. The firm should not be blacklisted.
- viii. The firm should be registered with PEC.
- ix. No transportation and carriage charges will be paid for delivery/installation.
- x. Items/materials can be increased or decreased.
- xi. The Competent Authority reserves the right to accept or reject all or any Tender before acceptance.
- xii. 100% payment will be release after satisfactory completion of job.
- xiii. The interested parties may send their sealed tenders to the Project Director,(STEM) PSF 1- Constitution Avenue, G-5/2, Islamabad on or before 17th January till 1100 hrs. Which will be opened on the same date at 1130 hrs in PSF in presence of the bidders/ their authorized representatives if they care to do so. Late tenders/ incomplete tenders will be ignored.
- xiv. Performance Security (where needed) of 8% of contact value in shape of bank guarantee applicable to the successful bidder.

Project Director
(STEM)
Pakistan Science Foundation
1-Constitution Avenue, G-5/2
Islamabad.
Tel: 051-9215096
051-9204549
Fax: 051-9202468

xvii. PERFORMANCE SECURITY BOND (Bank Guarantee)

Guarantee No. _____

Executed On _____

Expiry Date _____

(Letter by the Guarantor to Pakistan Science Foundation, PSF)

Name of Guarantor (Scheduled Bank in Pakistan) with address: _____

Name of Principal (Contractor) with address: _____

Penal Sum of Security (express in words and figures) _____

Letter of Acceptance No. _____

Dated _____

KNOW ALL MEN BY THESE PRESENTS, that in pursuance of the terms of the Bidding Documents and above said Letter of Acceptance (hereinafter called the Documents) and at the request of the said Principal we, the Guarantor above named, are held and firmly bound unto the (hereinafter called PSF) _____ in the penal sum of the amount stated above, for the payment of which sum well and truly to be made to the PSF, we bind ourselves, our heirs, executors, administrators and successors, jointly and severally, firmly by these presents.

THE CONDITION OF THIS OBLIGATION IS SUCH that whereas the Principal has accepted the PSF's above said Letter of Acceptance for (Name of Contract) _____

_____ fo
r the _____ (Name of Project).

NOW THEREFORE, if the Principal (Contractor) shall well and truly perform and fulfill all the undertakings, covenants, terms and conditions of the said Documents during the original terms of the said Documents and any extensions thereof that may be granted by the PSF, with or without notice to the Guarantor, which notice is, hereby, waived and shall also well and truly perform and fulfill all the undertakings, covenants terms and conditions of the Contract and of any and all modifications of the said Documents that may hereafter be made, notice of which modifications to the Guarantor being hereby waived, then, this obligation to be void; otherwise to remain in full force and virtue till all requirements of Clause 9, Remedying Defects, of Conditions of Contract are fulfilled.

Our total liability under this Guarantee is limited to the sum stated above and it is a condition of any liability attaching to us under this Guarantee that the claim for payment in writing shall be received by us within the validity period of this Guarantee, failing which we shall be discharged of our liability, if any, under this Guarantee.

We _____, (the Guarantor), waiving all objections and defenses under the Contract, do hereby irrevocably and independently guarantee to pay to the PSF without delay upon the PSF's first written demand without cavil or arguments and without requiring the PSF to prove or to show grounds or reasons for such demand any sum or sums up to the amount stated above, against the PSF's written declaration that the Principal has refused or failed to perform the obligations under the Contract, for which payment will be effected by the Guarantor to PSF's designated Bank & Account Number.

PROVIDED ALSO THAT the PSF shall be the sole and final judge for deciding whether the Principal (Contractor) has duly performed his obligations under the Contract or has defaulted in fulfilling said obligations and the Guarantor shall pay without objection any sum or sums up to the amount stated above upon first written demand from the PSF forthwith and without any reference to the Principal or any other person.

IN WITNESS WHEREOF, the above bounded Guarantor has executed this Instrument under its seal on the date indicated above, the name and corporate seal of the Guarantor being hereto affixed and these presents duly signed by its undersigned representative, pursuant to authority of its governing body.

Guarantor (Bank)

Witness:

1. Name _____ Signature _____

_____ Address _____

Corporate Guarantor (Seal)

Title _____

2. Name _____ Signature _____

(Title & Address)

Corporate Guarantor (Seal)

ACCEPTANCE CERTIFICATE

I _____
OWNER/LEGAR REPRESENTATIVE OF M/S.

Hereby, confirm that terms & conditions mentioned in this Tender document are acceptable to me (as a whole) and I shall abide by these terms and conditions.

2. The supplied items/jobs done will be of the best quality/standard and as mentioned in the Tender Documents. I will be bound to replace any number of items/materials, if found sub-standard, unsatisfactory or defective, without any extra claim to PSF, Islamabad. If failed to do so I agree that PSF has the right to confiscate/forfeit the earnest money and may likely blacklist our firm.

Signature with seal:

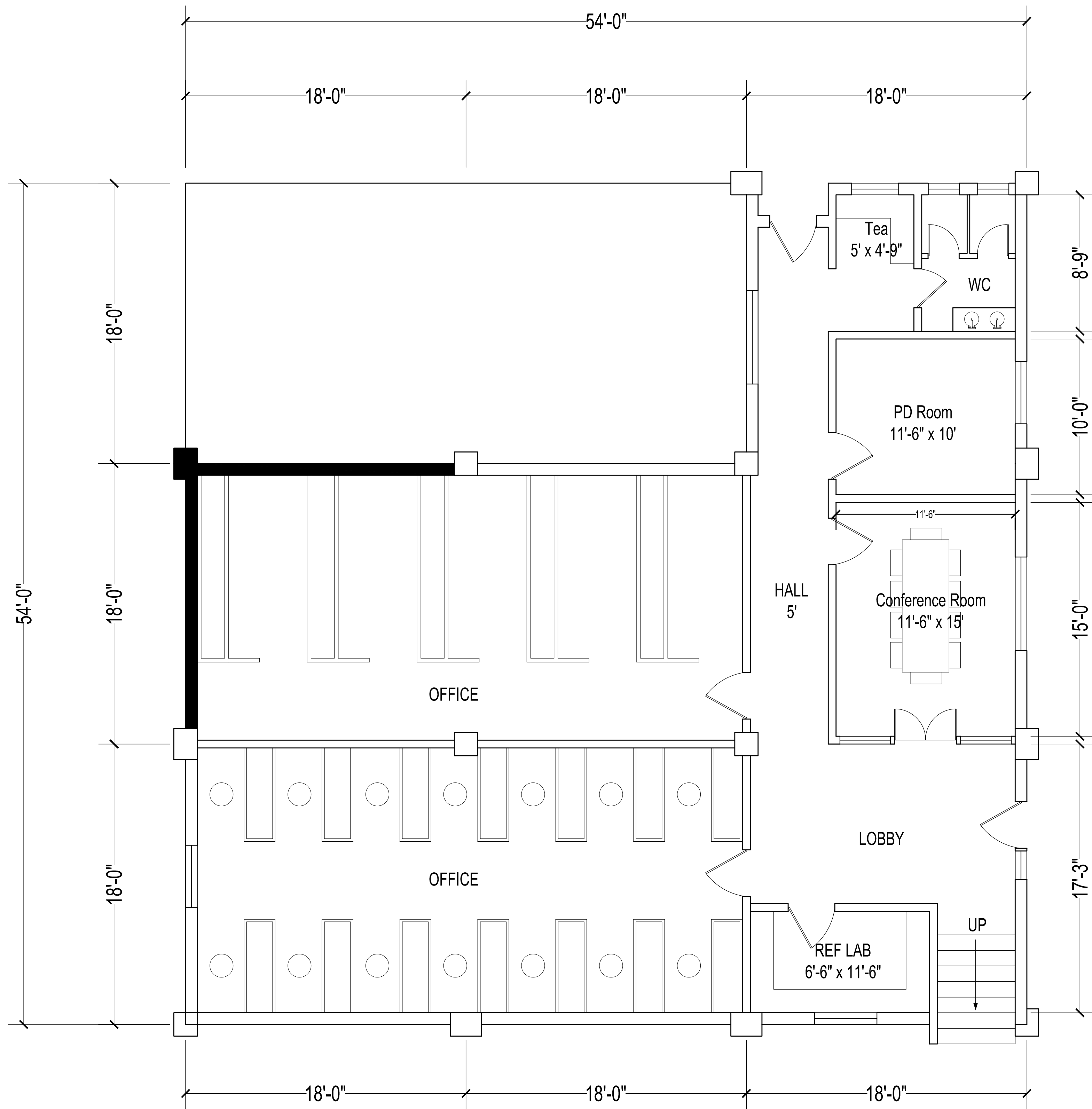
(Owner/representative) (Attested copy attached)

Dated

CNIC No. _____

Phone No. _____ **(Attested copy attached)**

Cell No. _____



Plan Alt 1

Drg.No.	CLIENT :	TITLE:	DATE:	ARCHITECTS Consultants AM & KK ASSOCIATES Engineers, Planners, Interior Designers Office # 01- 2nd Floor, Sharjah Center Block 20 D, G-10 Markaz, Islamabad Ph# 051-2352155, Mob # 0333-5616565 E - Mail : karrarkazim@ hotmail. com
	PROJECT :	CHECKED BY:	DRAWN BY:	
	PSF, ISLAMABAD	Plan Alt 1	28-09-2022	
	OFFICE			